



PRICE GUIDE: \$610,000.00

Area: 607 m2

Sold by Graham and Shelly Lynham

Much larger than its contemporaries, and freshly renovated, this 5-bedroom high-set home offers a modern and inviting take on a popular design.

Whether it be for a larger family, or an extended family with elderly parents, or even university student accommodation, owner occupier, or investor the possibilities are vast.

The upper level is accessed by internal stairs and offers fully air-conditioned living areas including three large bedrooms, functional kitchen, modern bathroom all with beautiful timber floors.

On the roof is a large array of German-quality solar panels.

THE PROPERTY

Upstairs



Graham Lynham
0447 250 222

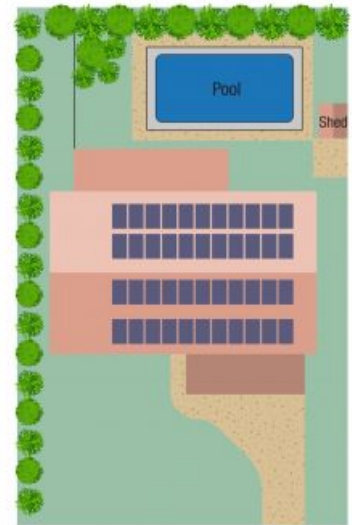


Shelly Lynham
0414 250 166



OFFICE

37Thuringowa Drive, Kirwan
07 4723 3222



Scale in metres. Indicative only. Dimensions are approximate. All information contained herein is gathered from sources we believe to be reliable. However we cannot guarantee its accuracy and interested persons should rely on their own enquiries.

Lynham
TOTAL AREA: 266.1 sq.m

7 Hibiscus Street, Cranbrook