



**PRICE GUIDE:** \$480,500.00

Area: 657 m2

## Low-Set, Low Maintenance Combined With Modern Living

Exceptionally well laid out, with an expansive open plan living space with glass sliding doors that open up to an outdoor patio. This modern contemporary home forms an ideal couple's base, a first-time family buy, an attractive investment property, or a hands-free abode for the retiree.

Set amongst quality homes, in a good child-friendly neighbourhood, and only moments from the park, this home represents a great opportunity for families and investors alike.

The expansive backyard is an extension of your living space, providing a private retreat for relaxation and recreation all with the addition of the 6x5m shed.

### THE PROPERTY

- 4 good size bedrooms with wardrobes
- Open living to lounge and dining room
- Covered Entertainment area accessed from t



**Nathan Lynham**  
0427 695 162

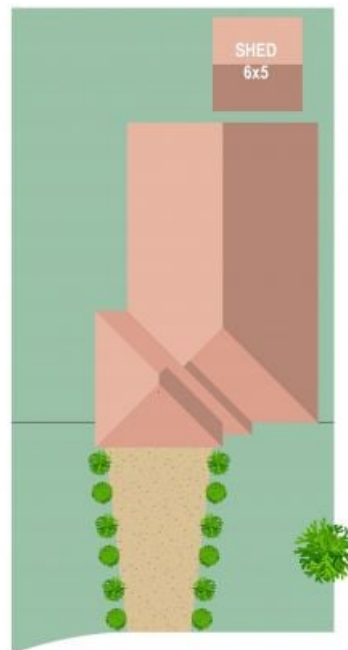


**Graham Lynham**  
0447 250 222



**OFFICE**

37Thuringowa Drive, Kirwan  
**07 4723 3222**



Scale in metres. Indicative only. Dimensions are approximate. All information contained herein is gathered from sources we believe to be reliable. However we cannot guarantee its accuracy and interested persons should rely on their own enquiries.

TOTAL AREA : 181.7 sq.m

6 Lochern Way, Bushland Beach