



PRICE GUIDE: \$400,000.00

Area: 600 m2

Sold by Shelly and Graham Lynham

This low-set home is in one of Townsville's most popular and sought-after suburbs, Deeragun, offers an affordable entry into Townsville's fast-moving real estate market.

Privately and securely positioned amongst similarly aged homes, and only 200m to Coles, Fast food, a service station, and a short drive to Northern Beaches State High School and the bOhle State School, the new owners will have convenience at their doorstep.

Offering a simple but functional design, with low maintenance gardens, all set on a fully fenced 600 m2 allotment, the home will suit owner-occupiers and investors alike.

THE PROPERTY

- Open plan living dining and kitchen
- Three bedrooms main with built in
- Split air conditioning to main bedroom
- Combination bathroom with shower/bathtub a



Shelly Lynham
0414 250 166

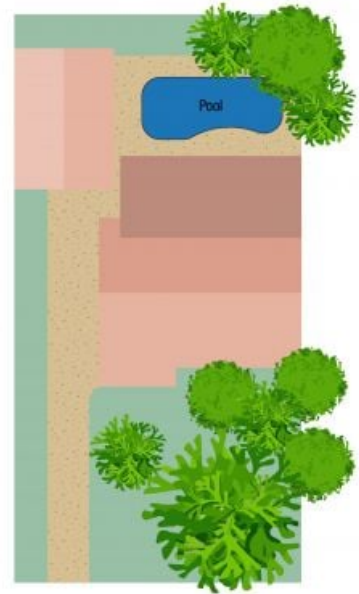
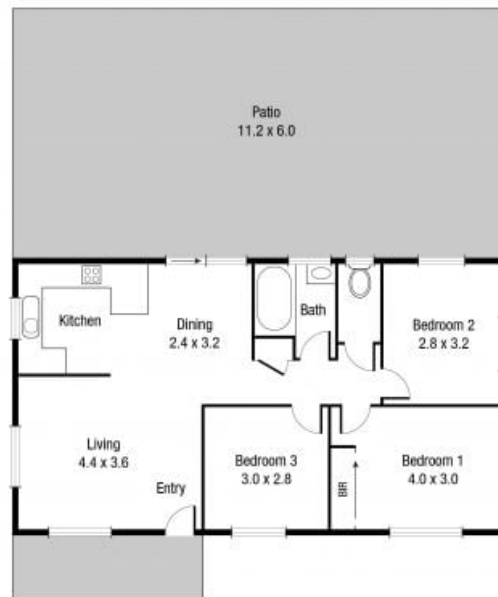
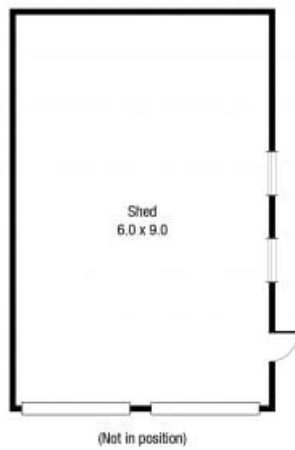


Graham Lynham
0447 250 222



OFFICE

37Thuringowa Drive, Kirwan
07 4723 3222



Scale in metres. Indicative only. Dimensions are approximate. All information contained herein is gathered from sources we believe to be reliable. However we cannot guarantee its accuracy and interested persons should rely on their own enquiries.

TOTAL AREA : 136.7 sq.m

3 Pepperwood Street, Deeragun