



PRICE GUIDE: Under Contract By Nathan Lynham
0427695162

Council Rates: \$3,222.94 p.q.

Rare find in quiet over 55's community close to Kmart and Stockland

This well-positioned unit in a quiet over 55's complex, is located just a short walk from two of Townsville's most popular shopping centres.

Featuring a 2 bedroom low set design, it's perfect for the downsizer, first home buyer or investor.

Featuring 2 bedrooms, one bathroom, open plan living and dining rooms, solar panels, as well the ability to park two cars in the garage, this is certainly the perfect complex to relax and enjoy a quiet, low-maintenance lifestyle.

The unit :

- 2 bedrooms
- Functional galley-style kitchen with ample storage
- Open plan lounge & dining room
- Functional bathroom with walk-in shower
- Internal laundry
- Fresh paint and carpet to the new main bed



Nathan Lynham
0427 695 162

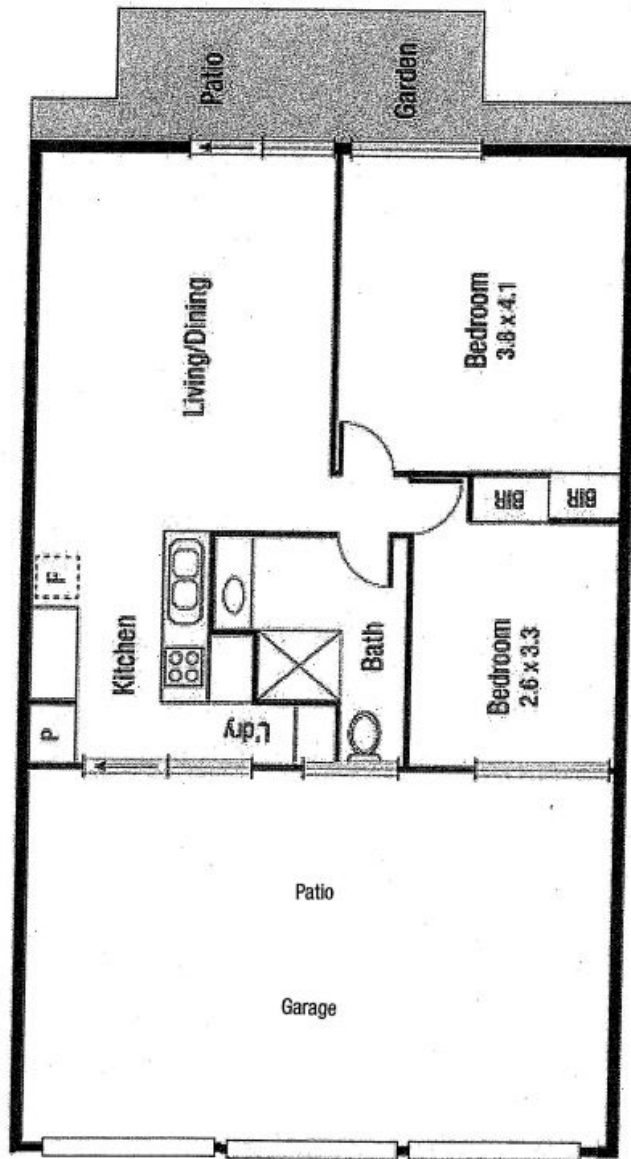


Graham Lynham
0447 250 222



OFFICE

37Thuringowa Drive, Kirwan
07 4723 3222



Scale in metres. Indicative only. Dimensions are approximate. All information contained herein is gathered from sources we believe to be reliable. However, we cannot guarantee its accuracy and interested persons should rely on their own enquiries.