



PRICE GUIDE: \$581,000.00

Area: 693 m2

Modern 4 Bedroom Family Home

This modern and contemporary residence delivers an open plan design on a 693sqm allotment, only 5 minutes from the beach.

Set in the family-friendly suburb of Bushland Beach, in Townsville's every expanding northern beaches corridor, it really is everything you could want in a home, without breaking the bank and is well-positioned to take advantage of all the nearby shops, schools, and conveniences.

THE PROPERTY

- Fully repainted with new carpets & blinds
- 4 bedrooms with wardrobes
- Open plan lounge & dining room
- Air-conditioning
- Modern well-appointed electric kitchen
- Main bedroom features a private ensuite & walk-in wardrobe
- Main bathroom with shower, bathtub & separate toilet
- Double remote garage



Nathan Lynham
0427 695 162

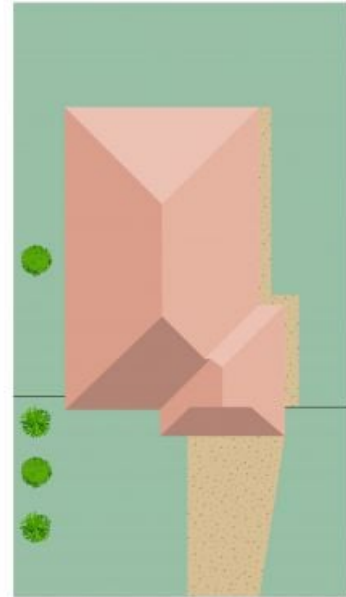


Graham Lynham
0447 250 222



OFFICE

37Thuringowa Drive, Kirwan
07 4723 3222



Scale in metres. Indicative only. Dimensions are approximate. All information contained herein is gathered from sources we believe to be reliable. However we cannot guarantee its accuracy and interested persons should rely on their own enquiries.

TOTAL AREA : 180.2 sq.m

11 Eungella Ct, Bushland Beach