



PRICE GUIDE: Under Contract By Nathan Lynham
0427695162

Area: 640 m2

Great Location, Close to Everything!

This low-maintenance home in Douglas is perfect for the first home buyer or investor looking to tap into this high-yielding suburb. It offers four generous bedrooms, a large open-plan living area, and a spacious yard, providing an enjoyable lifestyle with very little maintenance.

THE PROPERTY

- Open plan lounge & dining room
- 4 bedrooms with built-in wardrobes
- Main bedroom with ensuite & wardrobe
- Separate formal family room to the front of the home
- Galley-style kitchen with ample storage
- Main bathroom features separate shower & bath
- Private outdoor patio off living space.
- Double lock up garage
- 640sqm allotment
- Rates - \$4,661.08 per year
- Rent Appraisal - \$540-\$590 per week



Nathan Lynham
0427 695 162

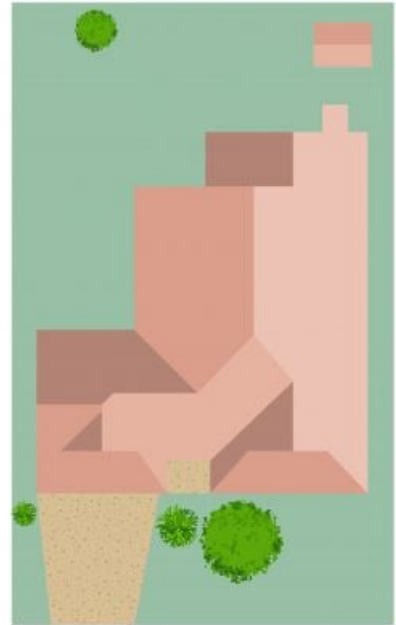


Graham Lynham
0447 250 222



OFFICE

37Thuringowa Drive, Kirwan
07 4723 3222



Scale in metres. Indicative only. Dimensions are approximate. All information contained herein is gathered from sources we believe to be reliable. However we cannot guarantee its accuracy and interested persons should rely on their own enquiries.

TOTAL AREA : 200 sq.m

25 Barwin Court, Douglas