



PRICE GUIDE: \$755,000.00

Area: 938 m2

Sold by Shelly and Graham Lynham

THE PROPERTY

- Family-sized kitchen is well appointed and has a large servery bench top
- Generous master bedroom at front of home with ensuite and walk-in robe
- Bedroom two and three at rear of home with built-ins.
- Bedroom four modified to act as large study with double doors and close to front of home with built ins
- Large open-plan living space that opens onto the outdoor patio area and is the perfect space to entertain family and friends
- Living area includes large family room, dining room and lounge room
- Rear patio, shaded in the afternoon, overlooking stunning backyard with large inground concrete pool
- Double garage with extra depth
- Large shade sail over driveway
- 8KW solar system



Shelly Lynham
0414 250 166

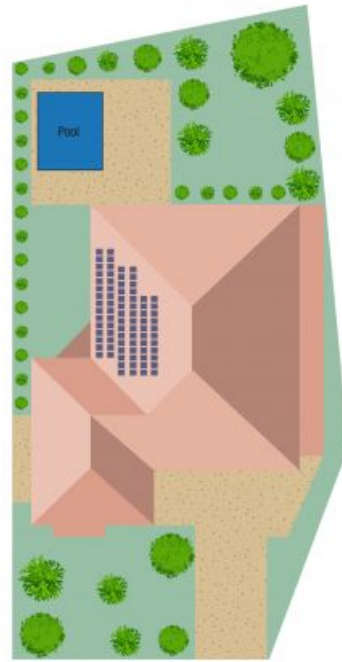


Graham Lynham
0447 250 222



OFFICE

37Thuringowa Drive, Kirwan
07 4723 3222



Scale in metres. Indicative only. Dimensions are approximate. All information contained herein is gathered from sources we believe to be reliable. However we cannot guarantee its accuracy and interested persons should rely on their own enquiries.

TOTAL AREA : 293.2 sq.m

7 Riley Cct, Kirwan