



PRICE GUIDE: Offers over \$1,950,000

Area: 56.7 m2

Council Rates: \$3,772.00 p.q.

Unmatched rural residential property on 56.7 acres - panoramic views to Mount El

Offering an unmatched blend of tranquillity and lifestyle, and situated on Townsville's southern fringe this premium rural property has been planned with fastidious detail and an equine focus.

Renovated to a bespoke standard by Lancini Homes the design takes advantage of the elevated position on the 56.7 acre allotment, offering unique views towards Mount Elliot National Park. You would be forgiven for not knowing you're less than 10 minutes drive to Fairfield Waters' Shopping Centre and 20 minutes to our city centre.

The Home :

- Mount Elliot National Park
- Large family room with sliding doors to se



Graham Lynham
0447 250 222

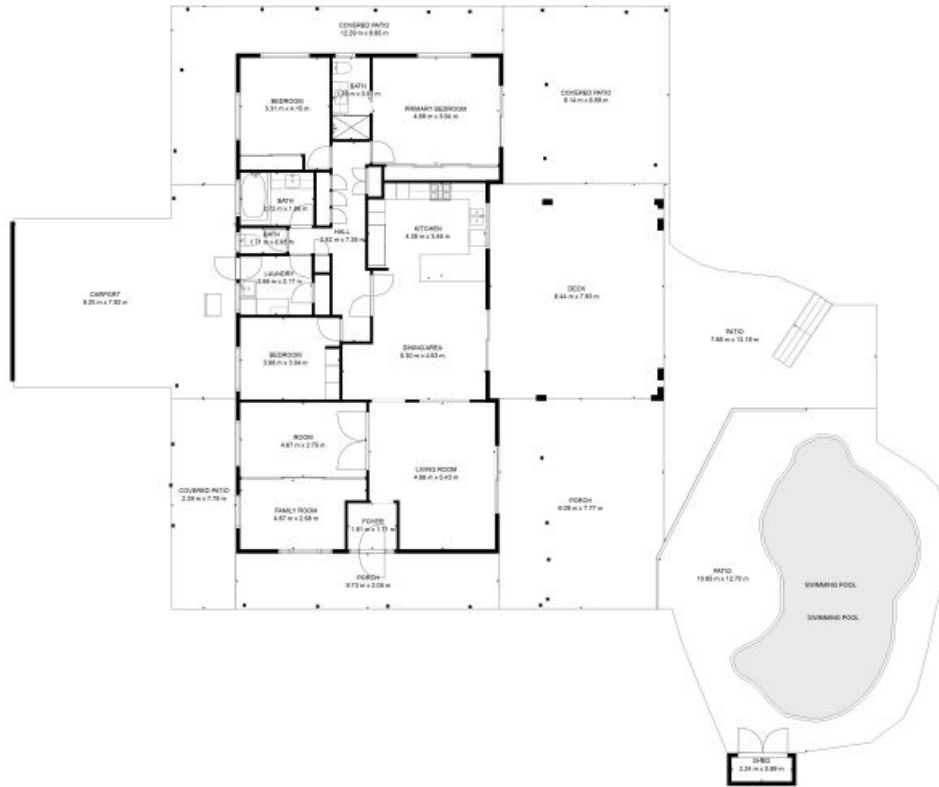


Shelly Lynham
0414 250 166



OFFICE

37Thuringowa Drive, Kirwan
07 4723 3222



Lynham Co.
REAL ESTATE

381m² - Carport 55m²

FLOOR PLAN CREATED BY CUBICAGA APP. MEASUREMENTS DEEMED HIGHLY RELIABLE BUT NOT GUARANTEED.