



PRICE GUIDE: \$480,000.00

Area: 525 m2

Council Rates: \$3,800.00 p.q.

Sold by Shelly and Graham Lynham

Beautifully presented and well maintained, this home will appeal to home owners and investors alike.

Set in modern tones and featuring three bedrooms, including master with ensuite, open living areas, modern kitchen, ensuite and bathroom, covered entertaining area at the rear, this home embodies low maintenance living within a fully fenced allotment.

THE PROPERTY

- Three bedrooms including master with ensuite.
- Functional open plan family home
- Fully tiled throughout
- Fully air conditioned throughout with split systems
- Two living areas
- Modern kitchen
- Neutral modern tones throughout
- Internal laundry Low maintenance block



Shelly Lynham
0414 250 166

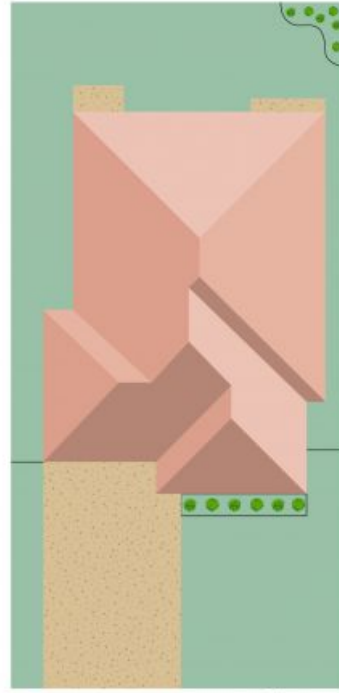
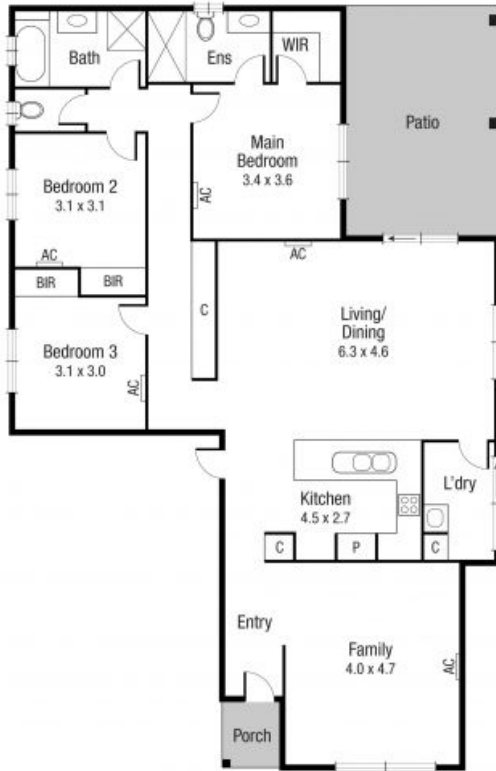


Graham Lynham
0447 250 222



OFFICE

37Thuringowa Drive, Kirwan
07 4723 3222



N

Lynham

TOTAL AREA: 155.2 sq.m

Scale in metres. Indicative only. Dimensions are approximate. All Information contained herein is gathered from sources we believe to be reliable. However we cannot guarantee its accuracy and interested persons should rely on their own enquiries.

6 Yarra Cres, Kelso