



PRICE GUIDE: UNDER CONTRACT - Offers Over \$410,000

Area: 809 m2

Centrally located low set family home

Sitting on a generously sized 809 m2 allotment, and just a short drive to Townsville City, this character filled three bedroom home offers an outstanding opportunity to buy live in one our most convenient suburbs.

THE PROPERTY

- 3 Bedrooms
- Large master bedroom with built-in wardrobes
- Open plan lounge & Formal dining space at the front
- Galley-style kitchen with ample storage, bench space & additional dining space
- Main bathroom with walk-in shower
- Internal laundry to the rear of the home with an additional second toilet
- Single lock-up carport
- Double carport
- Private front patio
- Established gardens
- Fully fenced 809sqm block

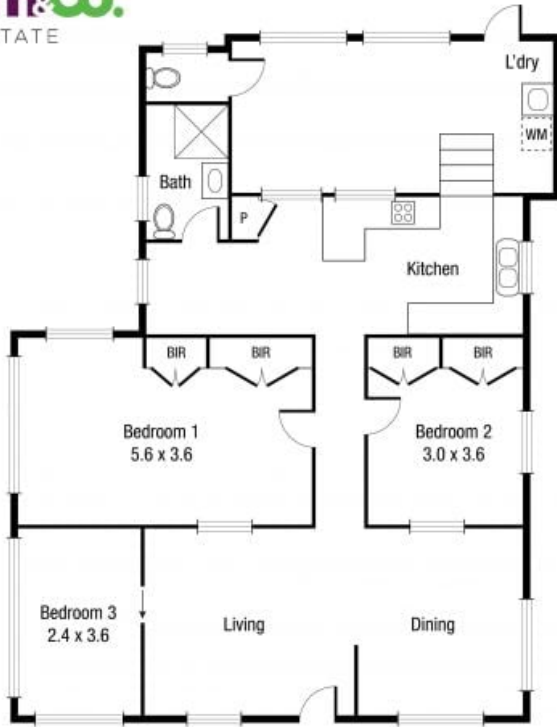


Nathan Lynham
0427 695 162



OFFICE

37Thuringowa Drive, Kirwan
07 4723 3222



Scale in metres. Indicative only. Dimensions are approximate. All information contained herein is gathered from sources we believe to be reliable. However we cannot guarantee its accuracy and interested persons should rely on their own enquiries.

TOTAL AREA : 110.2sq.m

7 Norris Street, Hermit Park