



**PRICE GUIDE:** Offer's over \$590,000

Area: 494 m2

## Endless opportunities for the extended family

Offering a blend of traditional Queenslander upstairs and modern living down, this centrally located home on the Townsville City fringe offers options for growing families.

From arrival you're met with the timeless street appeal that this generation of home offers, with the home finished to high standard including being freshly painted in modern colours, new fencing and manicured lawns.

Upstairs features the original home, which boasts three bedrooms, two of which are air-conditioned, a living area, air-conditioned dining room, functional kitchen and renovated bathroom and toilet.

No Queenslander would be complete without a large rear deck which faces east and offer's a cool escape for entertaining or just relaxing on hot summer days.

Downstairs adds another dimension, and offer



**Shelly Lynham**  
0414 250 166

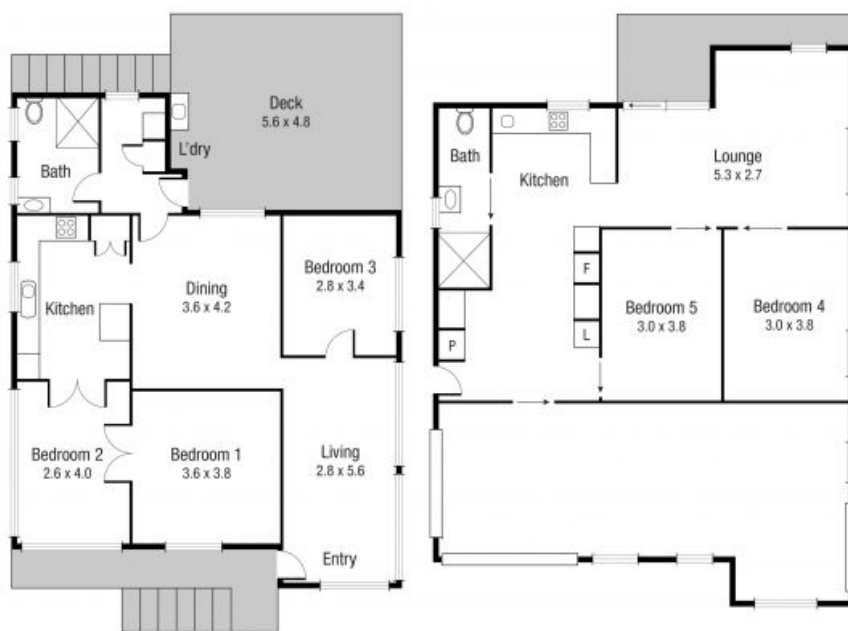


**Graham Lynham**  
0447 250 222



**OFFICE**

37Thuringowa Drive, Kirwan  
**07 4723 3222**



Scale in metres. Indicative only. Dimensions are approximate. All information contained herein is gathered from sources we believe to be reliable. However we cannot guarantee its accuracy and interested persons should rely on their own enquiries.

**TOTAL AREA : 238.6 sq.m**

**19 Whyte St, Hermit Park**